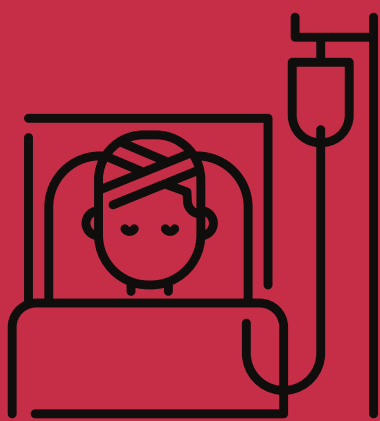


# INPATIENT

V S

# OUTPATIENT

COMPARE AND CONTRAST



Admitted To A  
Intense Medically-  
Assisted Care Facility



Doesn't Require  
Medical Assistance  
Care



Stay Up To Weeks,  
also Months at a  
Time



A Few Hours Every  
Week



Rehab. Services For  
Psychiatric  
Conditions and Drug  
Abuse



Consultations and  
Follow-Ups with Your  
Facility Staff